

A painting of a woman with blonde hair adorned with flowers, wearing a white long-sleeved shirt and blue jeans, lying on a bed of red and white roses in a lush garden. She is holding a black mobile phone to her ear. The background shows dense green foliage and a path leading into the distance. The overall style is reminiscent of 19th-century landscape painting.

Avoir son conseiller dédié en cas  
de sinistre tout en économisant  
en moyenne 310 € par an,  
*c'est beau.*

*Bob Vénables*

The logo for Direct Assurance, featuring a red square with a white stylized 'D' and the words 'Direct Assurance' in white text below it.

**Direct**  
Assurance



























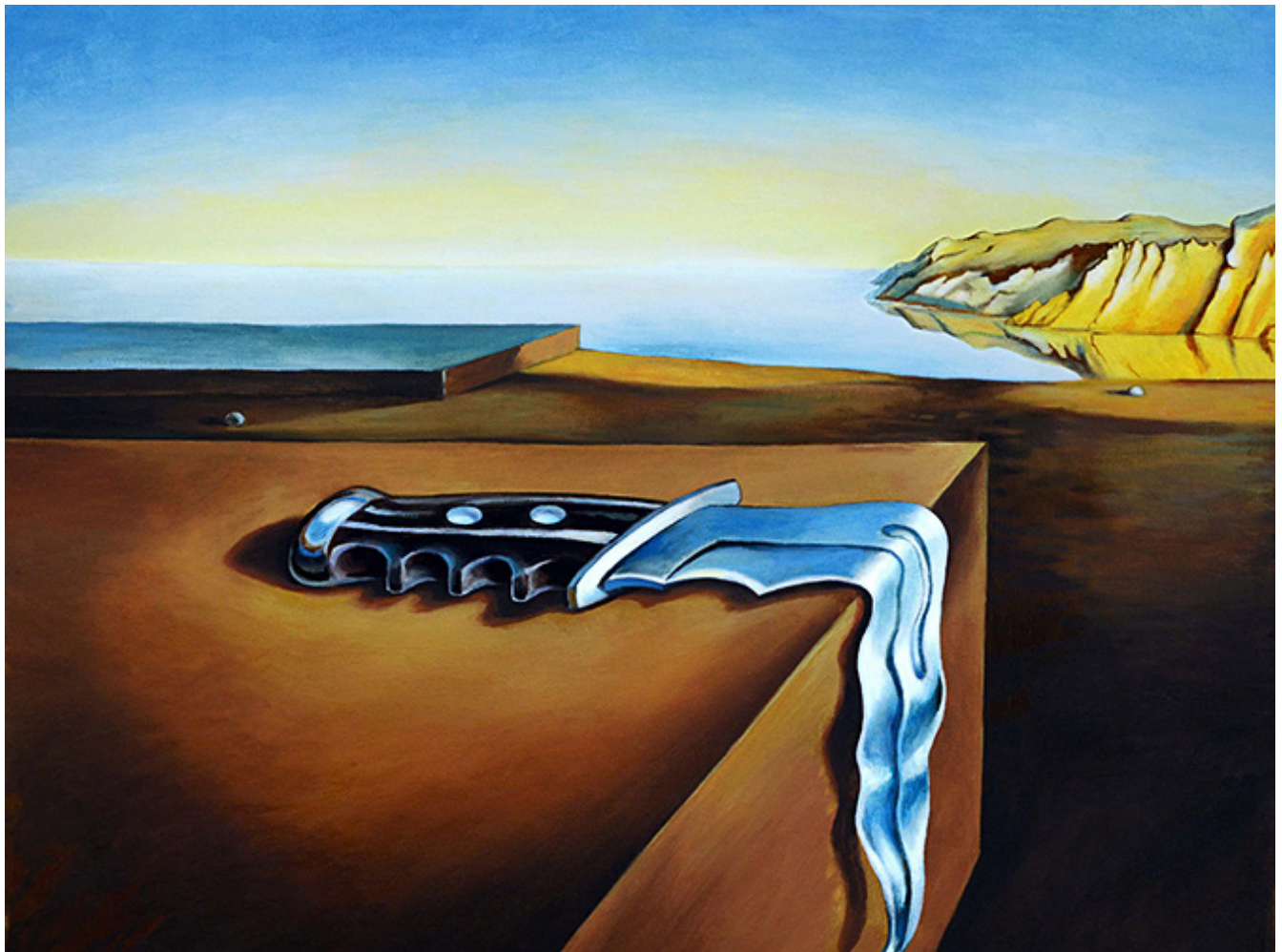




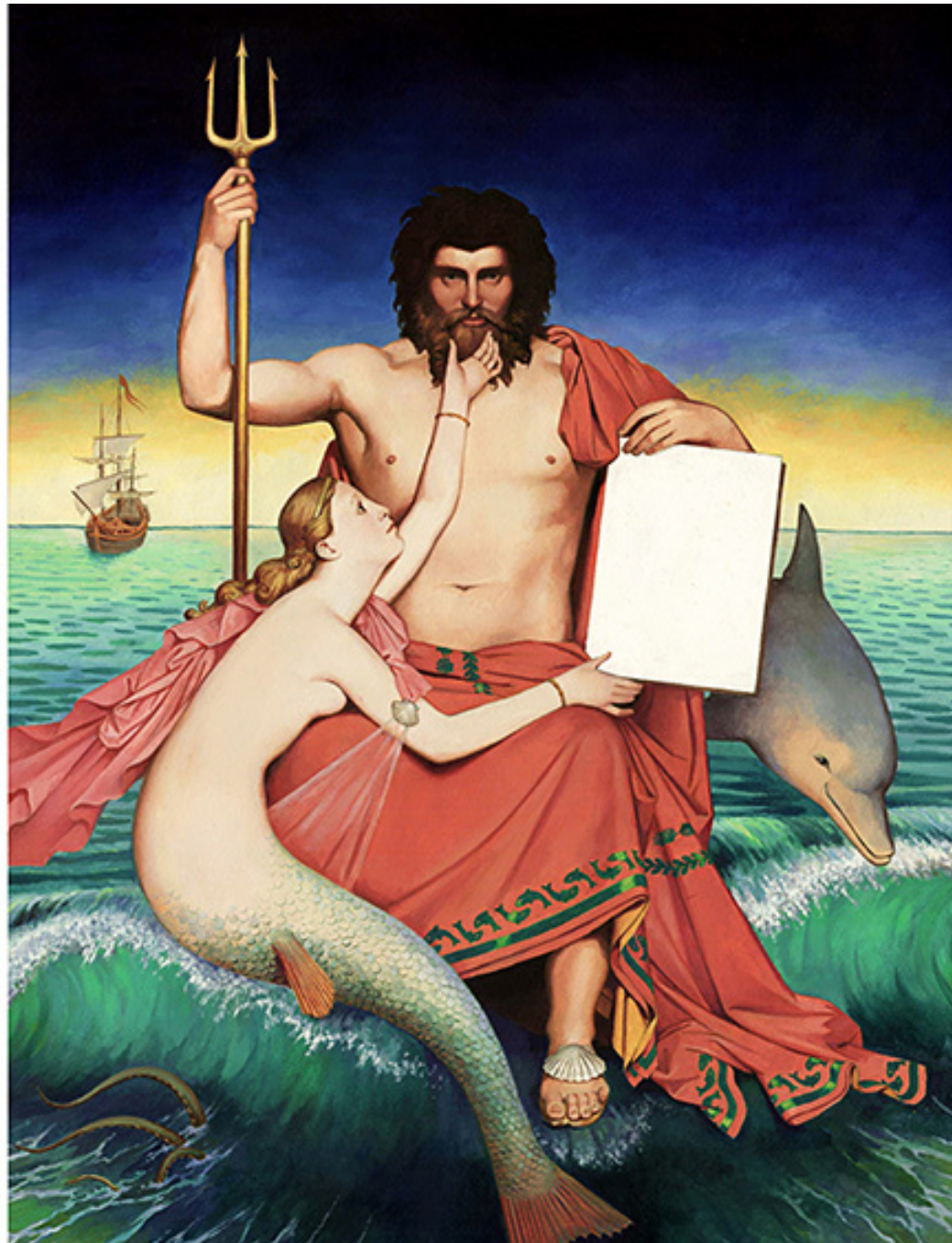








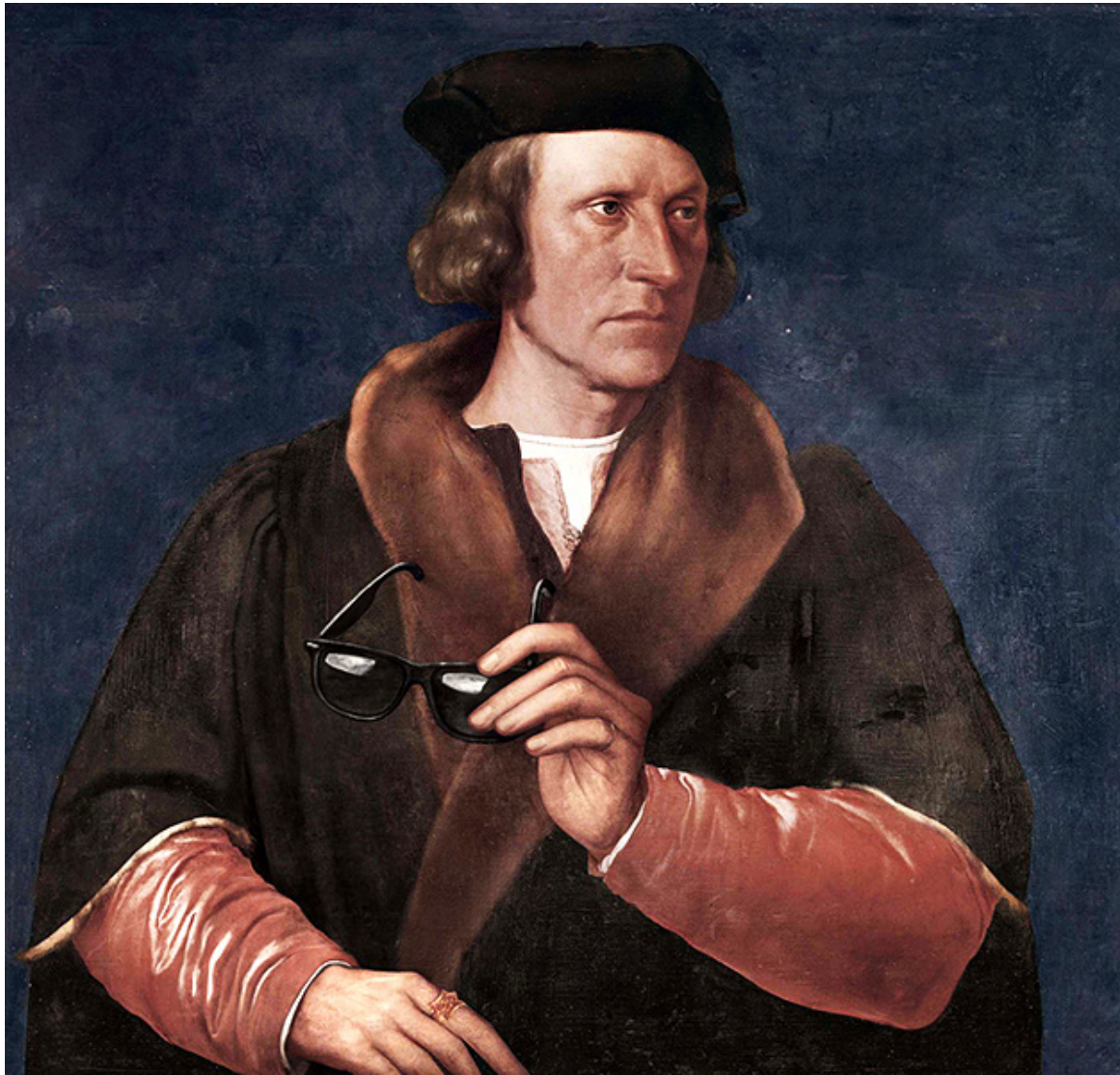






















Être relogé 10 jours en cas  
d'inondation tout en économisant  
en moyenne 310 € par an,  
*c'est beau.*

Bob Venables

Direct  
Assurance





